

WESTERN SUFFOLK BOCES
NASSAU - SUFFOLK
BI-COUNTY PUBLIC SCHOOL ENROLLMENT
2004 - 2013



Prepared by Western Suffolk BOCES, Division of Instructional Support Services

March 2011



Western Suffolk BOCES

Board of Cooperative Educational Services
of Western Suffolk County, New York

Mr. Peter Wunsch, *President*
Mrs. Mildred Browne, *Vice President*
Mr. Sydney Finkelstein
Mrs. Ilene Herz, Esq.
Mr. Salvatore Marinello
Mrs. Jeannette Santos
Mrs. Maryann Zumpano
Ms. Joan Johnson, *District Clerk*

Administration

Dr. Thomas Rogers.....Interim District Superintendent
Dr. Michael Mensch.....Deputy Superintendent and Chief Operating Officer
Paula Klingelhofer.....Executive Director, Instructional Support Services
Joan E. Townley.....Coordinator, Office of School Planning and Research

Office of School Planning & Research
Division of Instructional Support Services
31 Lee Avenue
Wheatley Heights, New York 11798
Tel: 631/595-6802
Fax: 631/623-4913

Dear Colleagues,

We are pleased to provide you with *The Annual Bi-County Nassau/Suffolk Public School Enrollment Report* that has been compiled by the **Office of School Planning and Research of Western Suffolk BOCES**. This document provides you with information about historical enrollments in these two Long Island counties as well as projected enrollments through 2013.

Public School Enrollment

Public school enrollment on Long Island has declined by 3.4 percent since 2004; 2.8 percent in Nassau County and 3.9 percent in Suffolk County. Projections suggest an additional decline of 2.5 percent in the region over the next three years. Elementary grades (K - 5) have shown the greatest decrease (5.7 percent) since 2004; an additional 3.1 percent loss is expected over the next three years. Declines have also been seen at the middle level (6 - 8) and are anticipated to continue. Losses at the high school level (9 - 12) are expected in the coming years as the smaller elementary and middle level cohorts reach the secondary schools. Smaller incoming kindergarten classes replaced larger exiting twelfth grade classes beginning in 2006. This trend is expected to continue in the projection years.

Enrollment in public schools is affected by demographic factors. These factors include the number of children being born in the area, economic and housing trends, non-public school enrollments and immigration/migration patterns. As these factors change, there is a positive or negative impact on local school districts' enrollments. The current downturn in the economy may exacerbate already declining enrollments as job losses, housing foreclosures, as well as a regionally high cost of living, cause increasing numbers of people to relocate to less costly areas.

Population Changes

Long Island experienced large population increases in the 1990's. Since then, the population has continued to grow, although at a slower pace than seen in the past. Factors contributing to recent increases include foreign immigration and natural increases (births minus deaths). Schools on Long Island reflected these population trends until 2004 when K - 12 enrollments peaked with 471,402 students. Since then, enrollments have been decreasing each year. This trend is expected to continue.

Long Island's population continues to experience changes in the age distribution of its residents. Both Nassau and Suffolk Counties saw a decline in the number of children under the age of five between 2000 and 2008. Nassau County also showed a decline in the percentage of people between the ages of 20 - 54, falling from 48.6 percent in 2000 to approximately 46 percent in 2008. Suffolk County showed a decline in the same age group, falling from 50 percent to 48 percent. However, both counties showed percentage increases in their aged 55 and over population between 2000 and 2008. The median age in both Nassau and Suffolk Counties continues to be greater than in New York State and the nation; 39.2 in Suffolk County and 41.8 in Nassau County in 2008. New York State's median age was 38 years, while the nation's was 36.9 years.

Births have been declining on Long Island since the 1990's and are expected to plateau at a lower level in the future. Also, recent data indicate that the percentage and number of pre-school children are decreasing and will continue to do so for the foreseeable future. This could be an indicator of out-migration of younger families, in addition to the decline in births. Together, these factors have the potential to impact school enrollments.

Immigration Impact

The most recent updates available suggest an increase in the foreign-born population in the United States, which now accounts for 12.5 percent of the population; New York State also reflects an increase to 21.8 percent of the population. Residents who were born abroad made up 20 percent of the population in Nassau County in 2008, while people born outside of the United States living in Suffolk County made up 13.4 percent of the population. Immigration is the second largest contributor to U.S. population growth, preceded only by immigrants' U.S.-born children. Together, immigrants and their U.S. born children account for the majority of population growth. A continuing but growing concern for school districts will be servicing the increasing population of bi-lingual and English as a Second Language students.

Housing Market

Economic conditions, which have led to tighter lending standards, foreclosures and reduced home values, continue to impact Long Island's housing market. Waning consumer confidence, continued high unemployment, fears about a double-dip recession and a volatile stock market have eroded the real estate market. Homes on Long Island sold at record levels until 2006, even though home prices and the cost of living on Long Island were very high. Since then, the housing market has fallen off significantly causing property values to decline. According to the New York Home Value Index, home values in New York State fell 9.5 percent between May 2008 and April 2010, while Long Island's values fell more than 11 percent during this time. Housing prices are expected to continue to decrease through 2011 and may stagnate well into mid-decade; markets are expected to pick up only when hiring increases substantially. We have seen that changes in the housing market have a significant impact on school enrollment.

Collectively, these factors will impact your school district. The best way to address them is to be aware of the trends that are developing in your immediate locale. By studying historical, as well as recent, enrollment and demographic trends, you can best prepare your school district for the future. *Western Suffolk BOCES* is available to support you in long-range planning by offering experienced, objective assistance in the following areas:

- ◆ ***Demographics*** – an analysis of population, births, housing, resident characteristics and non-public school enrollment.
- ◆ ***Enrollment*** – an analysis of historical enrollment trends and future enrollment projections for the district as a whole, for specific grade sub-sets, and for individual schools.
- ◆ ***Facilities*** – an analysis of each facility's capacity with an assessment of the impact of projected enrollment on future facility utilization and program delivery.
- ◆ ***Future Organization*** – a presentation of options, suited to district policy, allowing for equity in districts' schools, continued program excellence and implementation of educational goals.

Please do not hesitate to call if you would like to discuss our services and how it may promote your districts' goals.

Sincerely,

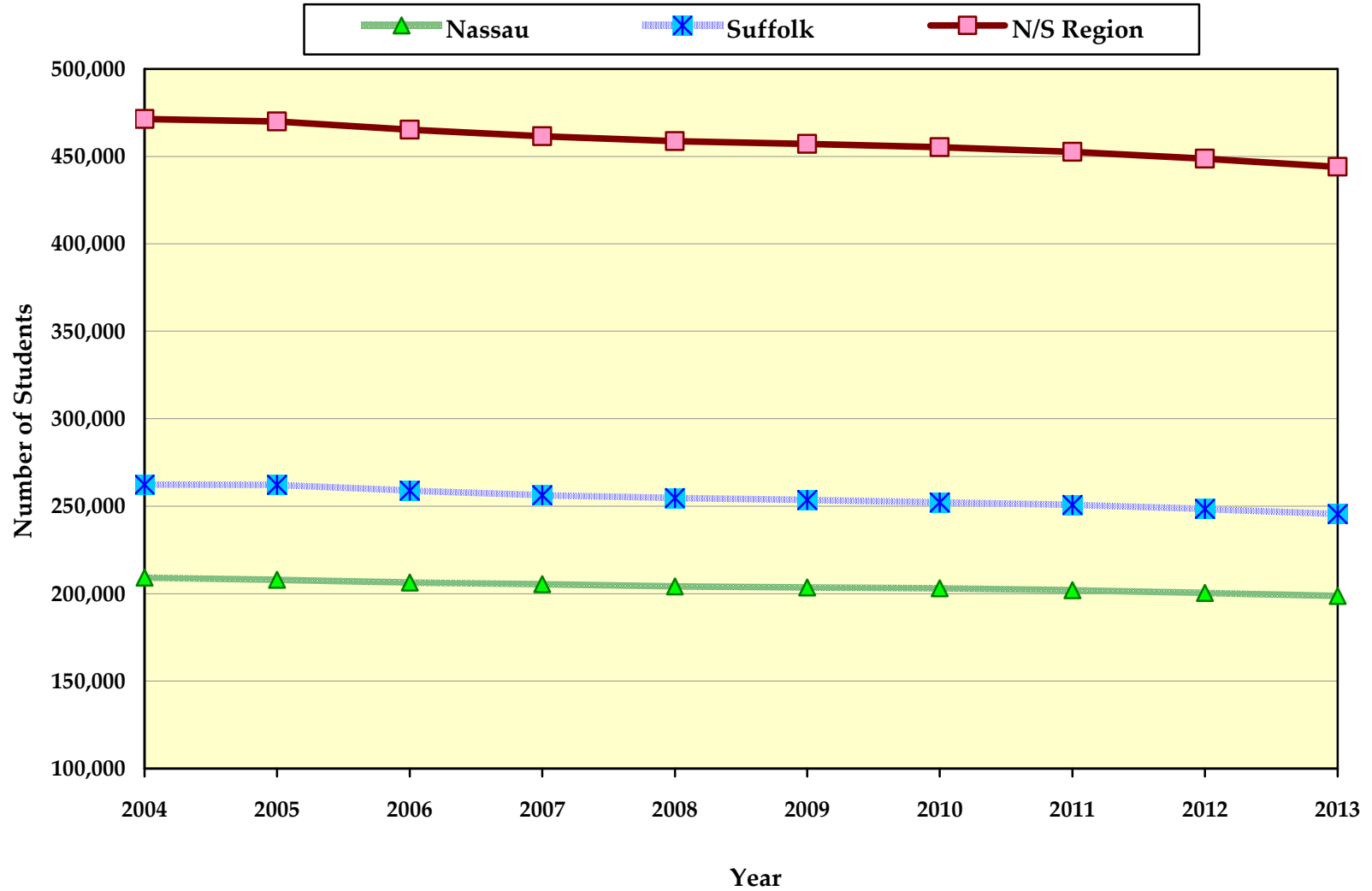
Paula Klingelhoef

Paula Klingelhoef, Executive Director

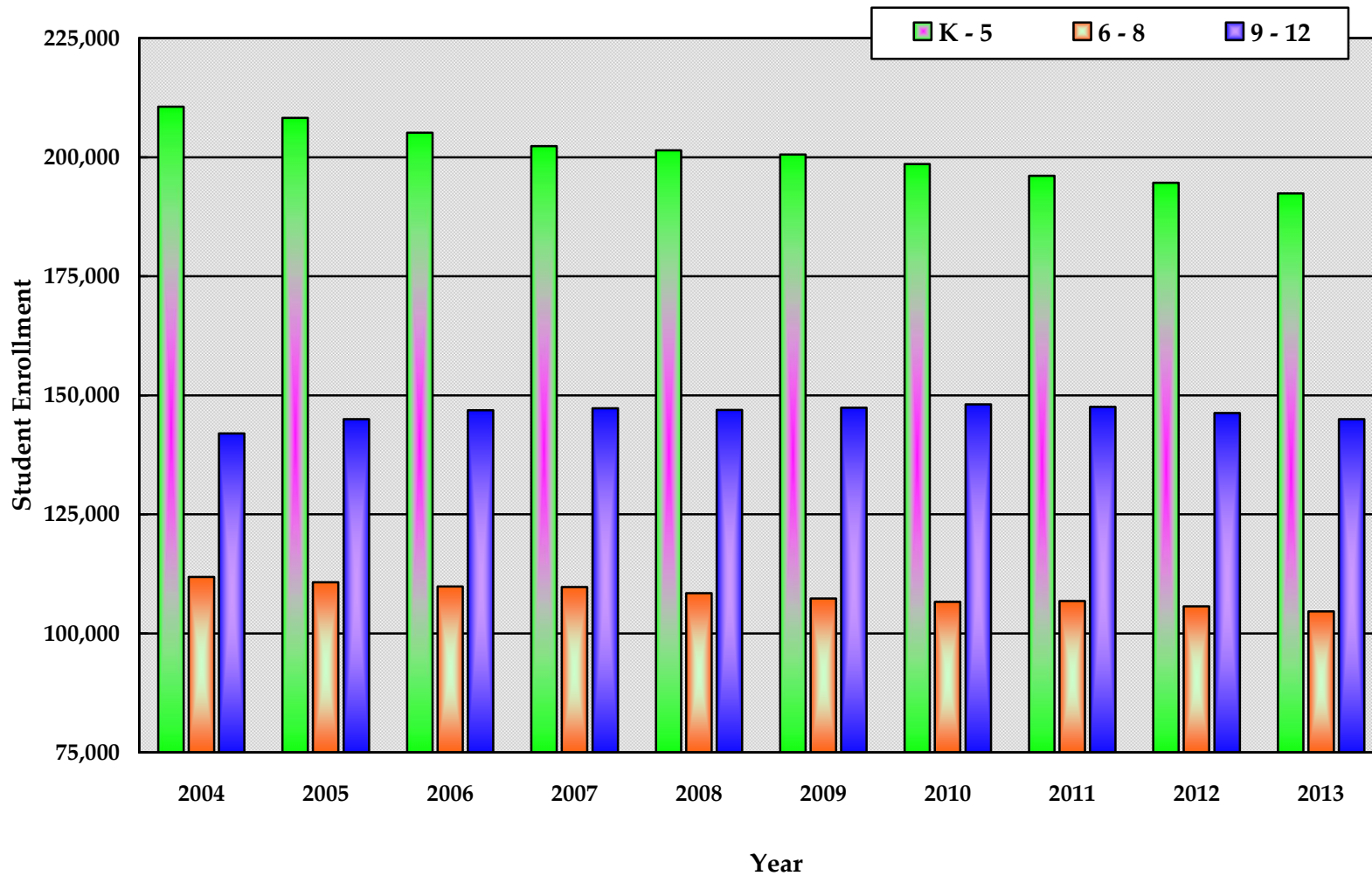
Joan E. Townley

Joan E. Townley, School Planning Coordinator

Nassau/Suffolk K - 12 Public School Enrollment, 2004 - 2013



Nassau - Suffolk Public School Enrollment by Grade Configuration, 2004 - 2013



NASSAU/SUFFOLK HISTORICAL PUBLIC SCHOOL ENROLLMENT

GRADE	Oct-04	Oct-05	Oct-06	Oct-07	Oct-08	Oct-09	Oct-10
KINDERGARTEN	33,185	33,153	31,880	31,662	31,909	31,678	30,703
FIRST	34,484	34,308	34,063	32,739	32,854	33,127	32,709
SECOND	34,752	34,346	34,230	34,239	32,845	32,948	33,270
THIRD	35,594	34,629	34,355	34,352	34,553	33,119	33,284
FOURTH	36,133	35,620	34,772	34,505	34,576	34,823	33,426
FIFTH	36,433	36,224	35,833	34,832	34,720	34,841	35,140
SIXTH	36,729	36,626	36,457	36,120	35,187	35,048	35,218
SEVENTH	37,558	36,780	36,718	36,729	36,330	35,586	35,440
EIGHTH	37,523	37,340	36,661	36,903	36,938	36,652	35,931
NINTH	39,480	38,728	38,159	37,626	38,170	38,281	37,952
TENTH	36,807	38,074	37,990	37,773	36,938	37,446	37,758
ELEVENTH	34,400	35,163	36,732	36,326	36,508	35,911	36,750
TWELFTH	31,304	32,996	33,984	35,545	35,292	35,767	35,615
UNGRADED	7,020	6,051	3,389	2,187	1,866	1,935	2,147
TOTAL	471,402	470,038	465,223	461,538	458,686	457,162	455,343
% CHANGE		-0.3%	-1.0%	-0.8%	-0.6%	-0.3%	-0.4%

NASSAU/SUFFOLK HISTORICAL PUBLIC SCHOOL ENROLLMENT (excluding ungraded)

GRADE	Oct-04	Oct-05	Oct-06	Oct-07	Oct-08	Oct-09	Oct-10
K - 5	210,581	208,280	205,133	202,329	201,457	200,536	198,532
% CHANGE		-1.1%	-1.5%	-1.4%	-0.4%	-0.5%	-1.0%
6 - 8	111,810	110,746	109,836	109,752	108,455	107,286	106,589
% CHANGE		-1.0%	-0.8%	-0.1%	-1.2%	-1.1%	-0.6%
9 - 12	141,991	144,961	146,865	147,270	146,908	147,405	148,075
% CHANGE		2.1%	1.3%	0.3%	-0.2%	0.3%	0.5%

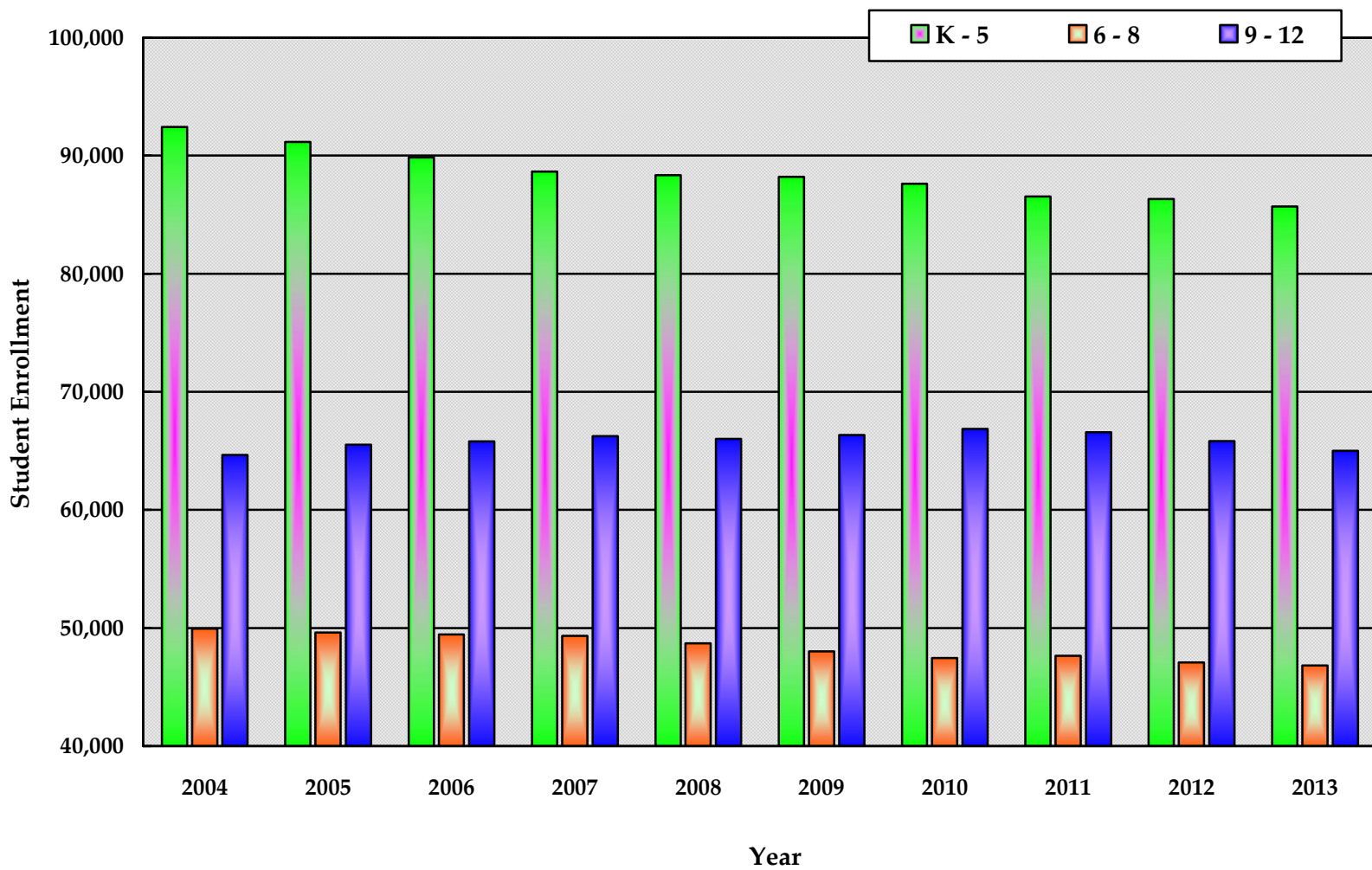
NASSAU/SUFFOLK PROJECTED PUBLIC SCHOOL ENROLLMENT

GRADE	Oct-10 actual	Oct-11	Oct-12	Oct-13
KINDERGARTEN	30,703	30,836	30,279	29,668
FIRST	32,709	31,710	31,843	31,275
SECOND	33,270	32,815	31,816	31,948
THIRD	33,284	33,575	33,115	32,109
FOURTH	33,426	33,525	33,818	33,354
FIFTH	35,140	33,659	33,759	34,053
SIXTH	35,218	35,532	34,032	34,135
SEVENTH	35,440	35,540	35,857	34,344
EIGHTH	35,931	35,694	35,795	36,114
NINTH	37,952	37,078	36,835	36,940
TENTH	37,758	37,424	36,561	36,320
ELEVENTH	36,750	36,879	36,555	35,709
TWELFTH	35,615	36,209	36,335	36,017
UNGRADED	2,147	2,123	2,105	2,084
TOTAL	455,343	452,599	448,705	444,070
% CHANGE		-0.6%	-0.9%	-1.0%

NASSAU/SUFFOLK PROJECTED PUBLIC SCHOOL ENROLLMENT (excluding ungraded)

GRADE	Oct-10 actual	Oct-11	Oct-12	Oct-13
K - 5	198,532	196,120	194,630	192,407
% CHANGE		-1.2%	-0.8%	-1.1%
6 - 8	106,589	106,766	105,684	104,593
% CHANGE		0.2%	-1.0%	-1.0%
9 - 12	148,075	147,590	146,286	144,986
% CHANGE		-0.3%	-0.9%	-0.9%

Nassau County Public School Enrollment by Grade Configuration, 2004 - 2013



NASSAU COUNTY HISTORICAL PUBLIC SCHOOL ENROLLMENT

GRADE	Oct-04	Oct-05	Oct-06	Oct-07	Oct-08	Oct-09	Oct-10
KINDERGARTEN	14,164	14,180	13,572	13,619	13,666	13,688	13,408
FIRST	14,974	14,829	14,873	14,141	14,482	14,440	14,304
SECOND	15,248	14,986	14,884	15,122	14,284	14,627	14,649
THIRD	15,784	15,220	15,154	15,057	15,350	14,474	14,816
FOURTH	16,061	15,862	15,418	15,249	15,187	15,582	14,708
FIFTH	16,214	16,115	15,943	15,459	15,376	15,379	15,733
SIXTH	16,392	16,321	16,401	16,245	15,678	15,587	15,593
SEVENTH	16,883	16,505	16,466	16,489	16,397	15,857	15,769
EIGHTH	16,664	16,781	16,594	16,605	16,629	16,587	16,108
NINTH	17,857	17,120	16,995	16,719	17,097	17,243	17,162
TENTH	16,527	17,257	16,936	17,038	16,526	16,763	16,959
ELEVENTH	15,669	15,846	16,688	16,325	16,567	16,132	16,635
TWELFTH	14,599	15,291	15,173	16,158	15,831	16,212	16,108
UNGRADED	2,036	1,553	1,282	1,174	1,007	990	1,173
TOTAL	209,072	207,866	206,379	205,400	204,077	203,561	203,125
% CHANGE		-0.6%	-0.7%	-0.5%	-0.6%	-0.3%	-0.2%

NASSAU COUNTY HISTORICAL PUBLIC SCHOOL ENROLLMENT (excluding ungraded)

GRADE	Oct-04	Oct-05	Oct-06	Oct-07	Oct-08	Oct-09	Oct-10
K - 5	92,445	91,192	89,844	88,647	88,345	88,190	87,618
% CHANGE		-1.4%	-1.5%	-1.3%	-0.3%	-0.2%	-0.6%
6 - 8	49,939	49,607	49,461	49,339	48,704	48,031	47,470
% CHANGE		-0.7%	-0.3%	-0.2%	-1.3%	-1.4%	-1.2%
9 - 12	64,652	65,514	65,792	66,240	66,021	66,350	66,864
% CHANGE		1.3%	0.4%	0.7%	-0.3%	0.5%	0.8%

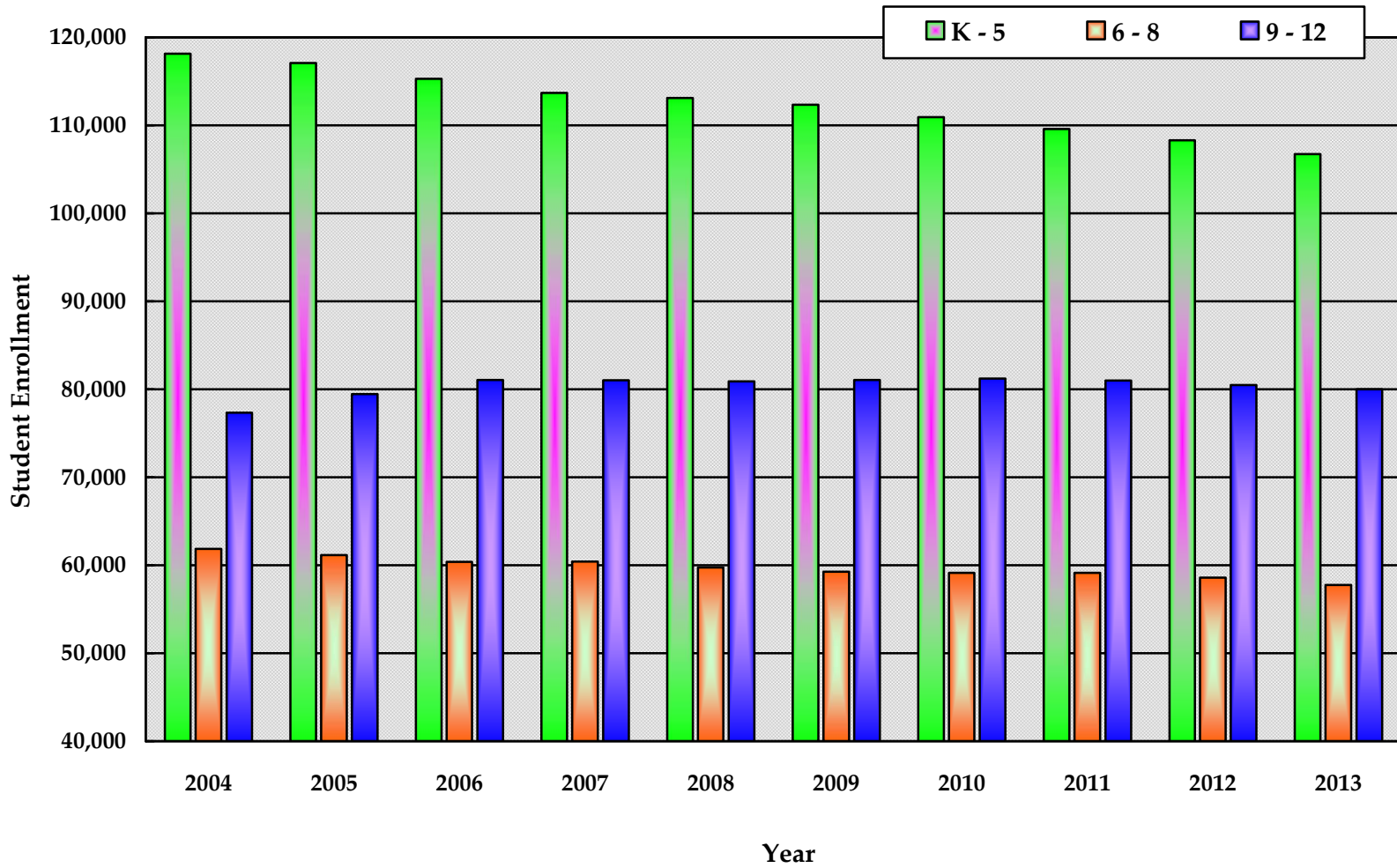
NASSAU COUNTY PROJECTED PUBLIC SCHOOL ENROLLMENT

GRADE	Oct-10 actual	Oct-11	Oct-12	Oct-13
KINDERGARTEN	13,408	13,330	13,296	13,168
FIRST	14,304	14,094	14,012	13,976
SECOND	14,649	14,461	14,249	14,166
THIRD	14,816	14,837	14,646	14,432
FOURTH	14,708	14,991	15,013	14,819
FIFTH	15,733	14,821	15,106	15,128
SIXTH	15,593	15,980	15,054	15,343
SEVENTH	15,769	15,739	16,129	15,195
EIGHTH	16,108	15,926	15,896	16,289
NINTH	17,162	16,527	16,341	16,310
TENTH	16,959	16,971	16,343	16,159
ELEVENTH	16,635	16,676	16,688	16,070
TWELFTH	16,108	16,408	16,448	16,460
UNGRADED	1,173	1,166	1,157	1,147
TOTAL	203,125	201,927	200,378	198,662
% CHANGE		-0.6%	-0.8%	-0.9%

NASSAU COUNTY PROJECTED PUBLIC SCHOOL ENROLLMENT (excluding ungraded)

GRADE	Oct-10 actual	Oct-11	Oct-12	Oct-13
K - 5	87,618	86,534	86,322	85,689
% CHANGE		-1.2%	-0.2%	-0.7%
6 - 8	47,470	47,645	47,079	46,827
% CHANGE		0.4%	-1.2%	-0.5%
9 - 12	66,864	66,582	65,820	64,999
% CHANGE		-0.4%	-1.1%	-1.2%

Suffolk County Public School Enrollment by Grade Configuration, 2004 - 2013



SUFFOLK COUNTY HISTORICAL PUBLIC SCHOOL ENROLLMENT

GRADE	Oct-04	Oct-05	Oct-06	Oct-07	Oct-08	Oct-09	Oct-10
KINDERGARTEN	19,021	18,973	18,308	18,043	18,243	17,990	17,295
FIRST	19,510	19,479	19,190	18,598	18,372	18,687	18,405
SECOND	19,504	19,360	19,346	19,117	18,561	18,321	18,621
THIRD	19,810	19,409	19,201	19,295	19,203	18,645	18,468
FOURTH	20,072	19,758	19,354	19,256	19,389	19,241	18,718
FIFTH	20,219	20,109	19,890	19,373	19,344	19,462	19,407
SIXTH	20,337	20,305	20,056	19,875	19,509	19,461	19,625
SEVENTH	20,675	20,275	20,252	20,240	19,933	19,729	19,671
EIGHTH	20,859	20,559	20,067	20,298	20,309	20,065	19,823
NINTH	21,623	21,608	21,164	20,907	21,073	21,038	20,790
TENTH	20,280	20,817	21,054	20,735	20,412	20,683	20,799
ELEVENTH	18,731	19,317	20,044	20,001	19,941	19,779	20,115
TWELFTH	16,705	17,705	18,811	19,387	19,461	19,555	19,507
UNGRADED	4,984	4,498	2,107	1,013	859	945	974
TOTAL	262,330	262,172	258,844	256,138	254,609	253,601	252,218
% CHANGE		-0.1%	-1.3%	-1.0%	-0.6%	-0.4%	-0.5%

SUFFOLK COUNTY HISTORICAL PUBLIC SCHOOL ENROLLMENT (excluding ungraded)

GRADE	Oct-04	Oct-05	Oct-06	Oct-07	Oct-08	Oct-09	Oct-10
K - 5	118,136	117,088	115,289	113,682	113,112	112,346	110,914
% CHANGE		-0.9%	-1.5%	-1.4%	-0.5%	-0.7%	-1.3%
6 - 8	61,871	61,139	60,375	60,413	59,751	59,255	59,119
% CHANGE		-1.2%	-1.2%	0.1%	-1.1%	-0.8%	-0.2%
9 - 12	77,339	79,447	81,073	81,030	80,887	81,055	81,211
% CHANGE		2.7%	2.0%	-0.1%	-0.2%	0.2%	0.2%

SUFFOLK COUNTY PROJECTED PUBLIC SCHOOL ENROLLMENT

GRADE	Oct-10 actual	Oct-11	Oct-12	Oct-13
KINDERGARTEN	17,295	17,506	16,983	16,500
FIRST	18,405	17,616	17,831	17,299
SECOND	18,621	18,354	17,567	17,782
THIRD	18,468	18,738	18,469	17,677
FOURTH	18,718	18,534	18,805	18,535
FIFTH	19,407	18,838	18,653	18,925
SIXTH	19,625	19,552	18,978	18,792
SEVENTH	19,671	19,801	19,728	19,149
EIGHTH	19,823	19,768	19,899	19,825
NINTH	20,790	20,551	20,494	20,630
TENTH	20,799	20,453	20,218	20,161
ELEVENTH	20,115	20,203	19,867	19,639
TWELFTH	19,507	19,801	19,887	19,557
UNGRADED	974	957	948	937
TOTAL	252,218	250,672	248,327	245,408
% CHANGE		-0.6%	-0.9%	-1.2%

SUFFOLK COUNTY PROJECTED PUBLIC SCHOOL ENROLLMENT (excluding ungraded)

GRADE	Oct-10 actual	Oct-11	Oct-12	Oct-13
K - 5	110,914	109,586	108,308	106,718
% CHANGE		-1.2%	-1.2%	-1.5%
6 - 8	59,119	59,121	58,605	57,766
% CHANGE		0.0%	-0.9%	-1.4%
9 - 12	81,211	81,008	80,466	79,987
% CHANGE		-0.2%	-0.7%	-0.6%