

WESTERN SUFFOLK BOCES
NASSAU – SUFFOLK
REGIONAL PUBLIC SCHOOL ENROLLMENT
2002 – 2011



Prepared by Western Suffolk BOCES, Division of Instructional Support Services



APRIL 2009

Western Suffolk BOCES

Board of Cooperative Educational Services
of Western Suffolk County, New York

Mr. Peter Wunsch, *President*
Mrs. Mildred Browne, *Vice President*
Mr. Sydney Finkelstein
Mrs. Ilene Herz, Esq.
Mr. Salvatore Marinello
Mrs. Jeannette Santos
Mrs. Maryann Zumpano
Ms. Joan Johnson, *District Clerk*

Administration

Edward Zero.....Interim District Superintendent
Michael Mensch.....Deputy Superintendent and Chief Operating Officer
Paula Klingelhoef.....Executive Director, Instructional Support Services
Joan E. Townley..... Coordinator, Office of School Planning and Research

Office of School Planning & Research
Division of Instructional Support Services
31 Lee Avenue
Wheatley Heights, New York 11798
Tel: 631/595-6802
Fax: 631/623-4913
April, 2009

April, 2009

Dear Colleague,

We are pleased to provide you with *The Annual Regional Nassau/Suffolk Public School Enrollment Report* compiled by the Office of School Planning and Research of Western Suffolk BOCES. This resource document provides you with historical as well as projected enrollment figures for the next three years for school districts within our region.

Long Island's population has reached a plateau. According to the 2008 U.S. Census estimates, Nassau County experienced a slight decline (0.1%) and Suffolk County had virtually no change when compared to 2007 estimates. In addition, the median age of residents is increasing in both counties. The median age has risen in Nassau County to 41.2 years while in Suffolk County it is 39.2 years, according to 2007 estimates. Public school enrollment reflects the lack of overall population growth and aging in the two counties. In fact, decreasing enrollments have been seen across Long Island since 2005; this trend is expected to continue.

Enrollments in public schools are affected by a number of demographic factors, including the number of births in the area, median age of the population, immigration/migration rates, housing trends, and non-public school enrollments. Data in this report reflects the overall impact these factors have had in recent years on school district populations and the projected impact these factors may have in the near future.

Immigration/Migration

While indicators point to an increase in "domestic migrants", i.e., people who move off Long Island to other parts of the country, this is tempered by overseas immigration to Long Island. Between 2000 and 2007, there were notable increases in both the Hispanic and Asian populations in both counties. In general, according to the U.S. Census Bureau, immigrants who came to this country in the 1980's and 1990's had higher birthrates than those of non-immigrants. However, in general, this population's family size expectations are showing signs of declining. A consideration for school districts in the future may be a larger population of bilingual and English as a Second Language students in area schools.

Births

Overall, births have been declining in both counties since the 1990's. In addition, there has been a declining natural increase (births relative to deaths) in the population on Long Island. Both counties saw declining natural increases in 2005; the numbers recorded were the lowest since the late 1980's. A reported slight increase in births in both Nassau and Suffolk counties, however, was found in 2006 (the latest year data is available). This is expected to continue through 2009 before leveling off at a slightly lower level. This is an indication that **some** districts will experience larger kindergarten cohorts beginning in 2011. These cohorts, however, will be significantly smaller than those cohorts graduating from high school in those years. The net result will continue to be an overall decline in school enrollments in the region through 2011.

Housing Trends

The high level of housing sales on Long Island has been reversed, reflecting the tightening of lending standards in the face of an increasing number of foreclosures. The dramatic increases in housing inventories reflect the switch from a sellers' market to a buyers' market. Reductions in median home prices are being seen throughout Long Island. However, there remains a need for workforce-housing designed to attract young professionals, who would otherwise be priced out of the Long Island housing market. While this need has received recent attention, the reality of the slumping economy has stalled all types of building, including affordable housing. Existing land for new residential development in Nassau

County continues to decrease, with open space acquisitions further limiting available land to develop. While Suffolk County has more land available, open land preservation programs by town, county, and state agencies, along with changing zoning restrictions, have affected new residential construction. The current economic conditions have caused new construction to come to a virtual halt.

The Economy

The impact of recent economic changes on school enrollment within our region is yet to be determined. The Long Island economy, however, is not faring as well as in the past, with the annual growth of the Gross Domestic Product/Gross Metropolitan Product less on Long Island than the United States as a whole. Long Island is experiencing growing unemployment and the full impact of the reductions in the banking and financial workforce has yet to be felt. According to the *Long Island Index*, Long Island's downtowns showed a small increase in vacancy rates, indicating that the problems on Wall Street have not yet impacted Main Street. While the attractiveness of the region includes often high-wage jobs in the engineering, technology, biotechnology, electronics, education, health, tourism and other industries, average annual pay per employee was on the down swing in 2008 and is now on par with the United States as a whole. Ten years ago, Long Islanders earned more than the U.S. average, but, when adjusted for inflation, Long Island's average pay per employee was lower in 2008 than it was in 1999. (Long Island Index – 2009 Report and Key Findings).

At this time, it is uncertain whether job losses and the high cost of living on Long Island will drive more people to less expensive environments. Continued high rates of immigration are also uncertain. This report, therefore, projected enrollments for the next three years based on current trends and assumptions that take into consideration the factors that are known today.

Western Suffolk BOCES is available to support you in long-range planning by offering experienced, objective assistance in the following areas:

- **Demographics** – an analysis of population, births, housing, resident characteristics and non-public school enrollment.
- **Enrollment** – an analysis of historical enrollment trends and future enrollment projections for the district as a whole, for specific grade sub-sets, and for individual schools.
- **Facilities** – an analysis of each facility's capacity with an assessment of the impact of projected enrollment on future facility utilization and program delivery.
- **Future Organization** – a presentation of options, suited to district policy, allowing for equity in districts' schools, continued program excellence and implementation of educational goals.

Please do not hesitate to call if you would like to discuss our services and how it may promote your districts' goals.

Sincerely,

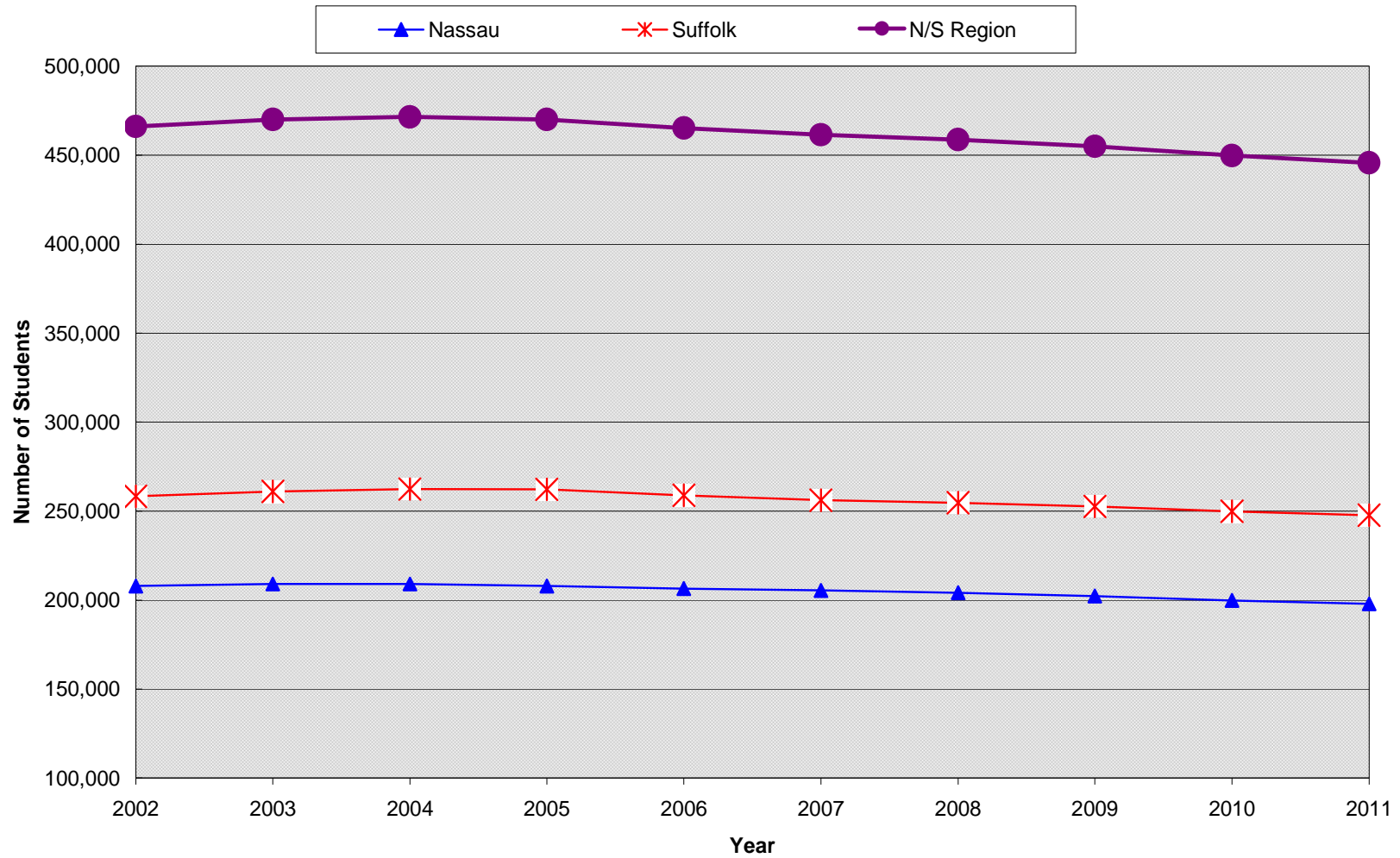
Paula Klingelhoef

Paula Klingelhoef, Executive Director

Joan E. Townley

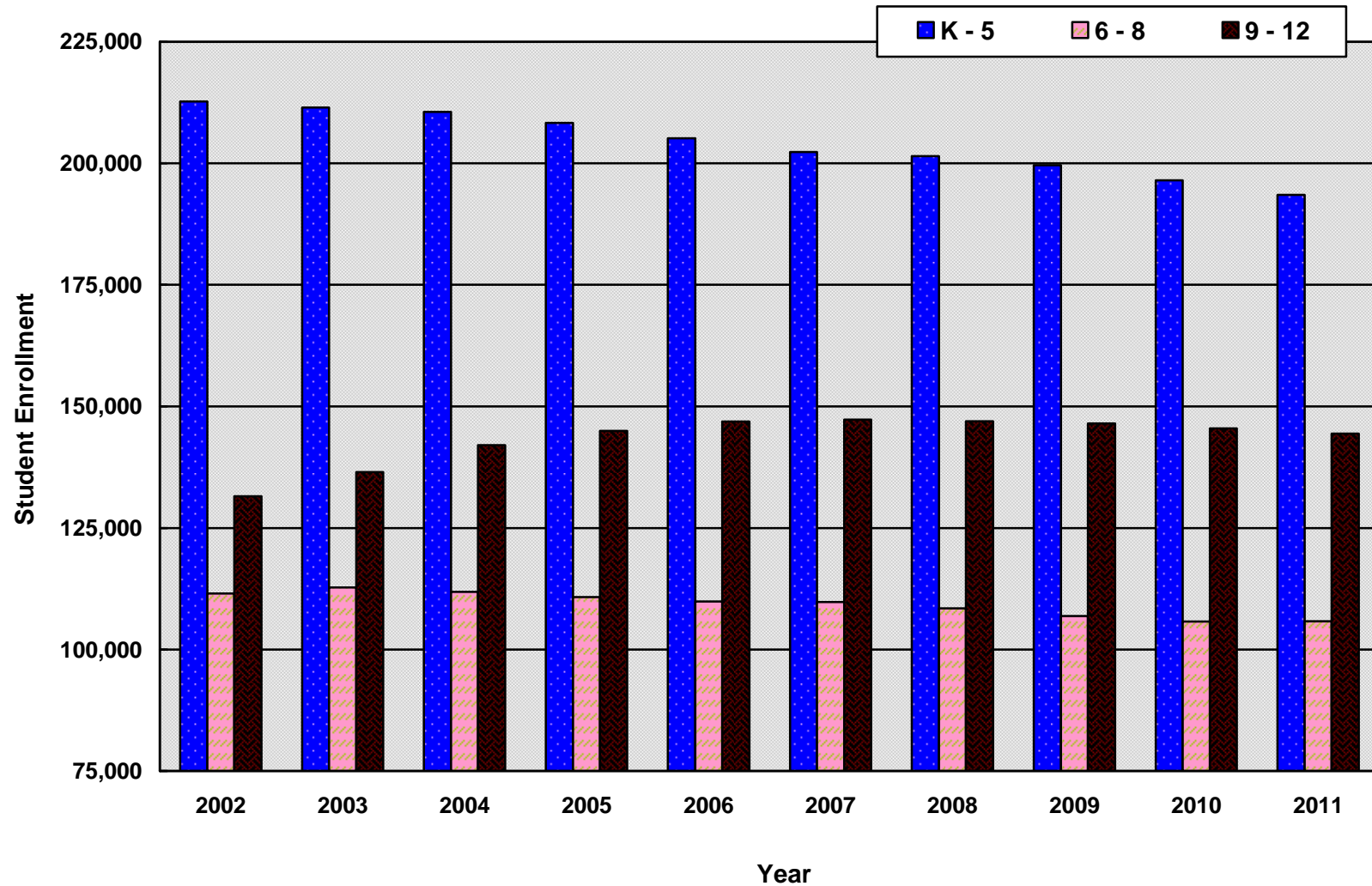
Joan E. Townley, School Planning Coordinator

Nassau - Suffolk K - 12 Public School Enrollment, 2002 - 2011



Note: NYSED provided updated 2007-08 Suffolk County public school enrollment which is reflected in this report.

Nassau - Suffolk Region Public School Enrollment by Grade Configuration, 2002 - 2011



Note: NYSED provided updated 2007-08 Suffolk County public school enrollment which is reflected in this report.

NASSAU/SUFFOLK REGION HISTORICAL PUBLIC SCHOOL ENROLLMENT

GRADE	Oct-02	Oct-03	Oct-04	Oct-05	Oct-06	Oct-07	Oct-08
KINDERGARTEN	32,883	33,141	33,185	33,153	31,880	31,662	31,909
FIRST	35,387	34,735	34,484	34,308	34,063	32,739	32,854
SECOND	35,749	35,330	34,752	34,346	34,230	34,239	32,845
THIRD	36,165	35,915	35,594	34,629	34,355	34,352	34,553
FOURTH	35,958	36,165	36,133	35,620	34,772	34,505	34,576
FIFTH	36,571	36,183	36,433	36,224	35,833	34,832	34,720
SIXTH	36,975	37,126	36,729	36,626	36,457	36,120	35,187
SEVENTH	38,024	37,516	37,558	36,780	36,718	36,729	36,330
EIGHTH	36,504	38,094	37,523	37,340	36,661	36,903	36,938
NINTH	36,660	37,849	39,480	38,728	38,159	37,626	38,170
TENTH	34,091	35,664	36,807	38,074	37,990	37,773	36,938
ELEVENTH	31,183	32,760	34,400	35,163	36,732	36,326	36,508
TWELFTH	29,572	30,191	31,304	32,996	33,984	35,545	35,292
UNGRADED	10,456	9,383	7,020	6,051	3,389	2,187	1,866
TOTAL	466,178	470,052	471,402	470,038	465,223	461,538	458,686
% CHANGE		0.8%	0.3%	-0.3%	-1.0%	-0.8%	-0.6%

NASSAU/SUFFOLK REGION HISTORICAL PUBLIC SCHOOL ENROLLMENT (excluding ungraded)

GRADE	Oct-02	Oct-03	Oct-04	Oct-05	Oct-06	Oct-07	Oct-08
K - 5	212,713	211,469	210,581	208,280	205,133	202,329	201,457
% CHANGE		-0.6%	-0.4%	-1.1%	-1.5%	-1.4%	-0.4%
6 - 8	111,503	112,736	111,810	110,746	109,836	109,752	108,455
% CHANGE		1.1%	-0.8%	-1.0%	-0.8%	-0.1%	-1.2%
9 - 12	131,506	136,464	141,991	144,961	146,865	147,270	146,908
% CHANGE		3.8%	4.1%	2.1%	1.3%	0.3%	-0.2%

Note: NYSED provided updated 2007-08 Suffolk County public school enrollment which is reflected in this report.

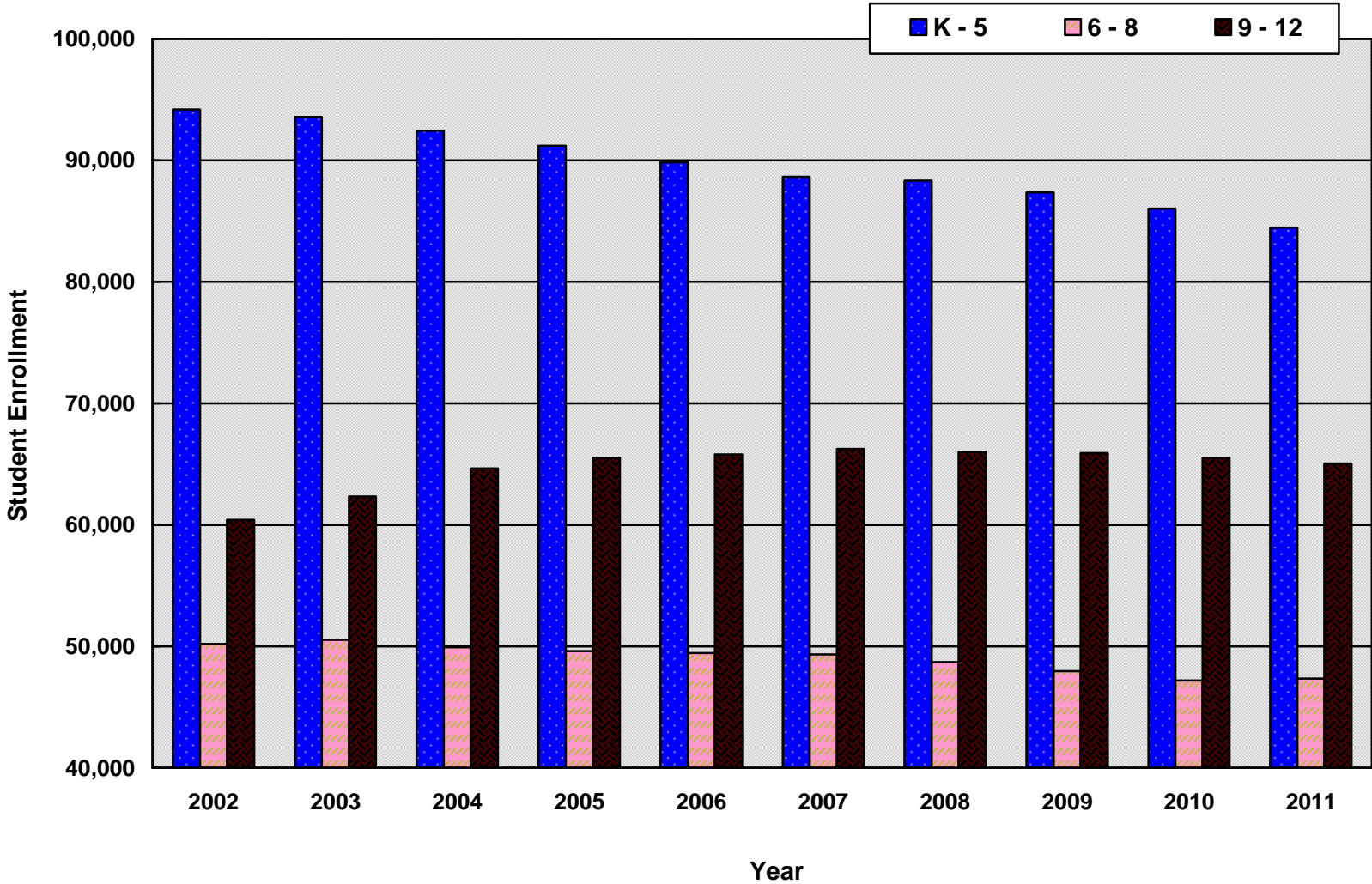
NASSAU/SUFFOLK REGION PROJECTED PUBLIC SCHOOL ENROLLMENT

GRADE	Oct-08 actual	Oct-09	Oct-10	Oct-11
KINDERGARTEN	31,909	31,287	30,063	30,424
FIRST	32,854	32,902	32,251	30,993
SECOND	32,845	32,925	32,970	32,314
THIRD	34,553	33,017	33,102	33,144
FOURTH	34,576	34,743	33,197	33,285
FIFTH	34,720	34,736	34,904	33,351
SIXTH	35,187	35,033	35,047	35,219
SEVENTH	36,330	35,372	35,217	35,231
EIGHTH	36,938	36,446	35,484	35,328
NINTH	38,170	37,965	37,457	36,471
TENTH	36,938	37,568	37,366	36,867
ELEVENTH	36,508	35,571	36,179	35,984
TWELFTH	35,292	35,379	34,471	35,060
UNGRADED	1,866	2,003	1,980	1,962
TOTAL	458,686	454,947	449,688	445,633
% CHANGE		-0.8%	-1.2%	-0.9%

NASSAU/SUFFOLK REGION PROJECTED PUBLIC SCHOOL ENROLLMENT (excluding ungraded)

GRADE	Oct-08 actual	Oct-09	Oct-10	Oct-11
K - 5	201,457	199,610	196,487	193,511
% CHANGE		-0.9%	-1.6%	-1.5%
6 - 8	108,455	106,851	105,748	105,778
% CHANGE		-1.5%	-1.0%	0.0%
9 - 12	146,908	146,483	145,473	144,382
% CHANGE		-0.3%	-0.7%	-0.7%

Nassau County Public School Enrollment by Grade Configuration, 2002 - 2011



NASSAU COUNTY HISTORICAL PUBLIC SCHOOL ENROLLMENT

GRADE	Oct-02	Oct-03	Oct-04	Oct-05	Oct-06	Oct-07	Oct-08
KINDERGARTEN	14,218	14,241	14,164	14,180	13,572	13,619	13,666
FIRST	15,512	15,244	14,974	14,829	14,873	14,141	14,482
SECOND	15,850	15,646	15,248	14,986	14,884	15,122	14,284
THIRD	16,141	16,027	15,784	15,220	15,154	15,057	15,350
FOURTH	16,069	16,165	16,061	15,862	15,418	15,249	15,187
FIFTH	16,395	16,238	16,214	16,115	15,943	15,459	15,376
SIXTH	16,422	16,627	16,392	16,321	16,401	16,245	15,678
SEVENTH	17,235	16,641	16,883	16,505	16,466	16,489	16,397
EIGHTH	16,532	17,265	16,664	16,781	16,594	16,605	16,629
NINTH	16,724	16,937	17,857	17,120	16,995	16,719	17,097
TENTH	15,750	16,262	16,527	17,257	16,936	17,038	16,526
ELEVENTH	14,298	15,325	15,669	15,846	16,688	16,325	16,567
TWELFTH	13,638	13,822	14,599	15,291	15,173	16,158	15,831
UNGRADED	3,167	2,615	2,036	1,553	1,282	1,174	1,007
TOTAL	207,951	209,055	209,072	207,866	206,379	205,400	204,077
% CHANGE		0.5%	0.0%	-0.6%	-0.7%	-0.5%	-0.6%

NASSAU COUNTY HISTORICAL PUBLIC SCHOOL ENROLLMENT (excluding ungraded)

GRADE	Oct-02	Oct-03	Oct-04	Oct-05	Oct-06	Oct-07	Oct-08
K - 5	94,185	93,561	92,445	91,192	89,844	88,647	88,345
% CHANGE		-0.7%	-1.2%	-1.4%	-1.5%	-1.3%	-0.3%
6 - 8	50,189	50,533	49,939	49,607	49,461	49,339	48,704
% CHANGE		0.7%	-1.2%	-0.7%	-0.3%	-0.2%	-1.3%
9 - 12	60,410	62,346	64,652	65,514	65,792	66,240	66,021
% CHANGE		3.2%	3.7%	1.3%	0.4%	0.7%	-0.3%

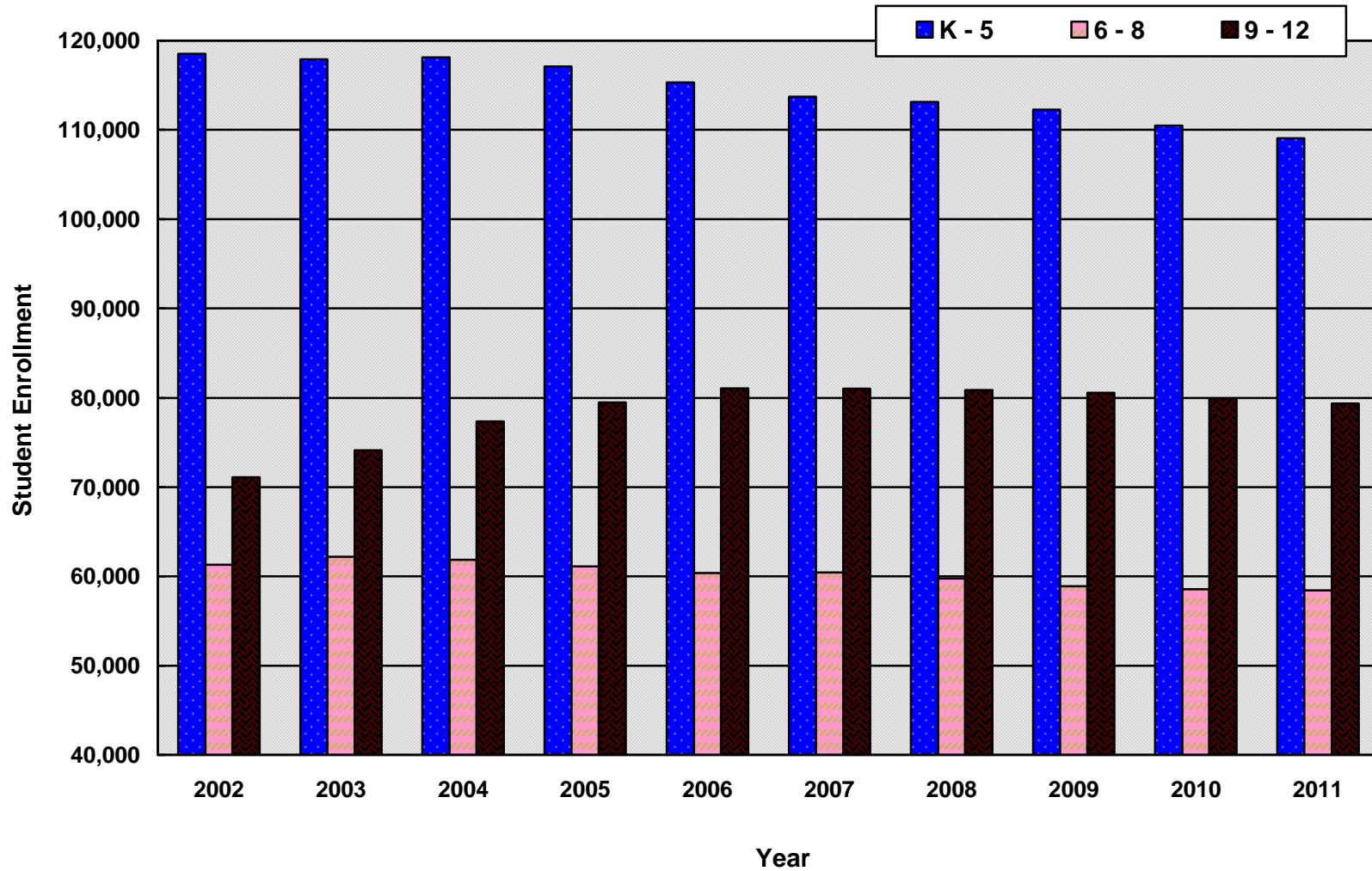
NASSAU COUNTY PROJECTED PUBLIC SCHOOL ENROLLMENT

GRADE	Oct-08 actual	Oct-09	Oct-10	Oct-11
KINDERGARTEN	13,666	13,143	12,712	12,800
FIRST	14,482	14,368	13,818	13,365
SECOND	14,284	14,630	14,514	13,959
THIRD	15,350	14,465	14,815	14,697
FOURTH	15,187	15,493	14,600	14,953
FIFTH	15,376	15,268	15,576	14,678
SIXTH	15,678	15,637	15,527	15,840
SEVENTH	16,397	15,801	15,760	15,649
EIGHTH	16,629	16,519	15,919	15,877
NINTH	17,097	16,906	16,794	16,184
TENTH	16,526	16,984	16,795	16,683
ELEVENTH	16,567	16,012	16,456	16,273
TWELFTH	15,831	16,009	15,473	15,902
UNGRADED	1,007	1,077	1,064	1,054
TOTAL	204,077	202,312	199,823	197,914
% CHANGE		-0.9%	-1.2%	-1.0%

NASSAU COUNTY PROJECTED PUBLIC SCHOOL ENROLLMENT (excluding ungraded)

GRADE	Oct-08 actual	Oct-09	Oct-10	Oct-11
K - 5	88,345	87,367	86,035	84,452
% CHANGE		-1.1%	-1.5%	-1.8%
6 - 8	48,704	47,957	47,206	47,366
% CHANGE		-1.5%	-1.6%	0.3%
9 - 12	66,021	65,911	65,518	65,042
% CHANGE		-0.2%	-0.6%	-0.7%

Suffolk County Public School Enrollment by Grade Configuration, 2002 - 2011



Note: NYSED provided updated 2007-08 Suffolk County public school enrollment which is reflected in this report.

SUFFOLK COUNTY HISTORICAL PUBLIC SCHOOL ENROLLMENT

GRADE	Oct-02	Oct-03	Oct-04	Oct-05	Oct-06	Oct-07	Oct-08
KINDERGARTEN	18,665	18,900	19,021	18,973	18,308	18,043	18,243
FIRST	19,875	19,491	19,510	19,479	19,190	18,598	18,372
SECOND	19,899	19,684	19,504	19,360	19,346	19,117	18,561
THIRD	20,024	19,888	19,810	19,409	19,201	19,295	19,203
FOURTH	19,889	20,000	20,072	19,758	19,354	19,256	19,389
FIFTH	20,176	19,945	20,219	20,109	19,890	19,373	19,344
SIXTH	20,553	20,499	20,337	20,305	20,056	19,875	19,509
SEVENTH	20,789	20,875	20,675	20,275	20,252	20,240	19,933
EIGHTH	19,972	20,829	20,859	20,559	20,067	20,298	20,309
NINTH	19,936	20,912	21,623	21,608	21,164	20,907	21,073
TENTH	18,341	19,402	20,280	20,817	21,054	20,735	20,412
ELEVENTH	16,885	17,435	18,731	19,317	20,044	20,001	19,941
TWELFTH	15,934	16,369	16,705	17,705	18,811	19,387	19,461
UNGRADED	7,289	6,768	4,984	4,498	2,107	1,013	859
TOTAL	258,227	260,997	262,330	262,172	258,844	256,138	254,609
% CHANGE		1.1%	0.5%	-0.1%	-1.3%	-1.0%	-0.6%

SUFFOLK COUNTY HISTORICAL PUBLIC SCHOOL ENROLLMENT (excluding ungraded)

GRADE	Oct-02	Oct-03	Oct-04	Oct-05	Oct-06	Oct-07	Oct-08
K - 5	118,528	117,908	118,136	117,088	115,289	113,682	113,112
% CHANGE		-0.5%	0.2%	-0.9%	-1.5%	-1.4%	-0.5%
6 - 8	61,314	62,203	61,871	61,139	60,375	60,413	59,751
% CHANGE		1.4%	-0.5%	-1.2%	-1.2%	0.1%	-1.1%
9 - 12	71,096	74,118	77,339	79,447	81,073	81,030	80,887
% CHANGE		4.3%	4.3%	2.7%	2.0%	-0.1%	-0.2%

Note: NYSED provided updated 2007-08 Suffolk County public school enrollment which is reflected in this report.

SUFFOLK COUNTY PROJECTED PUBLIC SCHOOL ENROLLMENT

GRADE	Oct-08 actual	Oct-09	Oct-10	Oct-11
KINDERGARTEN	18,243	18,144	17,351	17,624
FIRST	18,372	18,534	18,433	17,628
SECOND	18,561	18,295	18,456	18,355
THIRD	19,203	18,552	18,287	18,447
FOURTH	19,389	19,250	18,597	18,332
FIFTH	19,344	19,468	19,328	18,673
SIXTH	19,509	19,396	19,520	19,379
SEVENTH	19,933	19,571	19,457	19,582
EIGHTH	20,309	19,927	19,565	19,451
NINTH	21,073	21,059	20,663	20,287
TENTH	20,412	20,584	20,571	20,184
ELEVENTH	19,941	19,559	19,723	19,711
TWELFTH	19,461	19,370	18,998	19,158
UNGRADED	859	926	916	908
TOTAL	254,609	252,635	249,865	247,719
% CHANGE		-0.8%	-1.1%	-0.9%

SUFFOLK COUNTY PROJECTED PUBLIC SCHOOL ENROLLMENT (excluding ungraded)

GRADE	Oct-08 actual	Oct-09	Oct-10	Oct-11
K - 5	113,112	112,243	110,452	109,059
% CHANGE		-0.8%	-1.6%	-1.3%
6 - 8	59,751	58,894	58,542	58,412
% CHANGE		-1.4%	-0.6%	-0.2%
9 - 12	80,887	80,572	79,955	79,340
% CHANGE		-0.4%	-0.8%	-0.8%