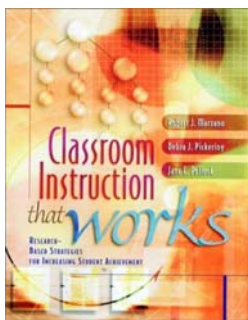
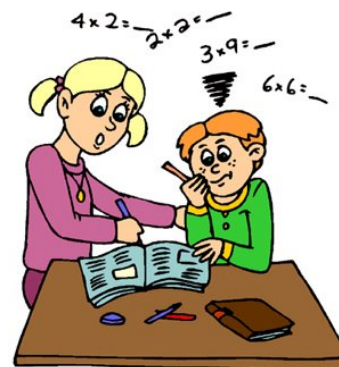


Strategies of Teaching Math

Mathematics Classroom Instruction that Works

This session utilizes Robert J. Marzano's book "*Classroom Instruction that Works*" and applies the Nine Strategies directly to mathematics. Although most of these techniques are known and employed in a somewhat random manner by many teachers already, and in fact more than likely they will not be "new" to the participants, these proven nine strategies require a depth of thinking that mathematics teachers have, but often do not apply to creative lessons and new technologies.



The workshop will focus on understanding the strategies, applying them to lessons and remaining in contact after the session to share our classroom experiences as to which were successful. As Marzano states, "We have come to the conclusion that a small group of educators within a school who are enthusiastic about a particular innovation can "infect" an entire staff with that enthusiasm. Quite literally, on occasion, we have seen a single individual in a school be the primary catalyst for substantive change."

Date: Thursday, October 29, 2009
Time: 8:30 am - 2:30 pm
Location: Western Suffolk BOCES
 Div of Instructional Support Svcs
 31 Lee Ave., Wheatley Heights, NY
Costs: \$100pp (A506 members)
 \$150pp (non-members)
Please make payment to:
Western Suffolk BOCES A506
If mailing payment, please send to:
 Western Suffolk BOCES
 31 Lee Ave., Wheatley Heights, NY 11798
 Att: Debbi Maxwell

Lawrence Farrell is a former mathematics teacher with 30 years experience. His career spans from teaching Algebra, Geometry and Algebra II/ Trigonometry through the Sequential Mathematics curriculum to Math A/Math B. He has expertise in various teaching styles and practical strategies in developing mathematical topics. He is presently focusing on the NYS Curriculum and Standards for Geometry. He has spent the past year administering sessions at BOCES and various school districts. "New sessions must be developed to keep mathematics teachers current and motivated". His approach has been and will continue to be asking the question, "What is needed?" followed by a "nuts and bolts" practical approach in responding.

To register with My Learning Plan
 Please copy this link into your browser:

<http://www.wsboces.org/webreg>

For registration information,
 please see the reverse side (pg 2) of this flyer.

Need information?

dmaxwell@wsboces.org or 631-595-6829

*Check with your district to see if you are a member of My Learning Plan
Workshop flyer maps for directions can be found on MLP*

For My Learning Plan Member Districts

If you are a member of My Learning Plan, you will be given a user name and password by your district. To see courses and to register, please do the following:

- ⇒ Log onto www.mylearningplan.com
- ⇒ Click on the Western Suffolk BOCES Catalog link

*If your district does NOT have a link to the WS BOCES catalog,
please copy this link into your web browser*

<http://www.wsboces.org/WebReg>

- ⇒ Select the course you'd like to enroll in
- ⇒ When ready, click the "Click to Enroll" button
- ⇒ Click MLP Users (Enter User Name & Password - Log in)
- ⇒ Enter personal registration information
- ⇒ Select payment method; click the "Next" button
- ⇒ Click Terms and Conditions button
- ⇒ Print the confirming enrollment form
- ⇒ Scroll down and read the rest of the information on the final screen
- ⇒ You will receive an email when you are registered

For Non-My Learning Plan Districts

Please click on this link to see the WS BOCES catalog.

<http://www.wsboces.org/WebReg>

At the top of the page will be a purple box. The workshops are divided up into programs.

- ⇒ Highlight the program you'd like to search workshops in and "search catalog"
- ⇒ Workshops will be listed in date order
- ⇒ Select the course you would like to enroll in
- ⇒ Click the "click to enroll" button
- ⇒ **Registered Users:** click "I'm a Registered User", then enter your email address and password to log in. Click "update and continue".
- ⇒ **New Users:** Click on "I'm a New User" and complete the form. When finished, click the "Create Account" button.
- ⇒ Enter personal registration information
- ⇒ Select payment method; click the "next" button
- ⇒ Click Terms and Conditions button
- ⇒ **PRINT THE CONFIRMING ENROLLMENT FORM. After receiving Administrators approval signature, please fax (631-623-4915) to Western Suffolk BOCES**
- ⇒ Click return to main
- ⇒ Click "logout" button to finish the process
- ⇒ You will receive an email when you are registered.