

BOARD OF COOPERATIVE EDUCATIONAL SERVICES
REPORT CARD



- Career and Technical Education
- Alternative Education
- Adult Career and Technical Education
- Adult Basic Education
- Special Education
- Professional Development
- 2024-2025** Expenses

2024-2025

WESTERN SUFFOLK BOCES

**WESTERN SUFFOLK BOCES
Board of Cooperative Educational Services
2024-2025 Report Card**

Table of Contents

	Page
Component/Non-Component District List.....	ii
 Indicators of BOCES Performance	
Career & Technical Education.....	1-3
Alternative Education.....	4-5
Adult Career & Technical Education.....	6
Adult Basic Education.....	6
Special Education	
Special Education Enrollment and Tuition in BOCES Programs.....	7-8
State Testing Program.....	8-11
Professional Development.....	12
 2024-2025 Expenses.....	 13

Prior editions of the BOCES Report Card included other data representing information on component districts.

The following data were not included in this report.

- ❖ State Testing Program for All Component Districts
- ❖ Graduation Results

BOCES
58930000000

Component Districts

- Amityville UFSD
- Babylon UFSD
- Cold Spring Harbor CSD
- Commack UFSD
- Deer Park UFSD
- Elwood UFSD
- Half Hollow Hills CSD
- Harborfields CSD
- Huntington CSD
- Huntington UFSD
- Kings Park CSD
- Lindenhurst UFSD
- North Babylon UFSD
- Northport-East Northport UFSD
- Smithtown CSD
- South Huntington UFSD
- West Babylon UFSD
- Wyandanch UFSD

WESTERN SUFFOLK BOCES encompasses 210 square miles

Joint Management Team

- Nassau BOCES
- Suffolk One (Eastern Suffolk BOCES)
- Suffolk Two (Western Suffolk BOCES)

Regional Information Center

- EASTERN SUFFOLK BOCES

**To learn more about the comprehensive nature of BOCES in NYS, go to:
<https://www.boces.org/>**

Indicators of BOCES Performance

Career & Technical Education (CTE)

BOCES CTE classes, offered primarily on a half-day basis, prepare high school students from component districts for skilled work force careers. Most CTE programs require two years to complete.

Number of 11th/12th grade students enrolled in a CTE two-year sequence:

- First-year students
- Second-year students
- Second-year students completing
- Completers with technical endorsement

General Education Students	Students with Disabilities	General Education Students	Students with Disabilities
2023-2024	2023-2024	2024-2025	2024-2025
715	374	823	350
472	264	474	294
370	202	395	212
268	143	254	134

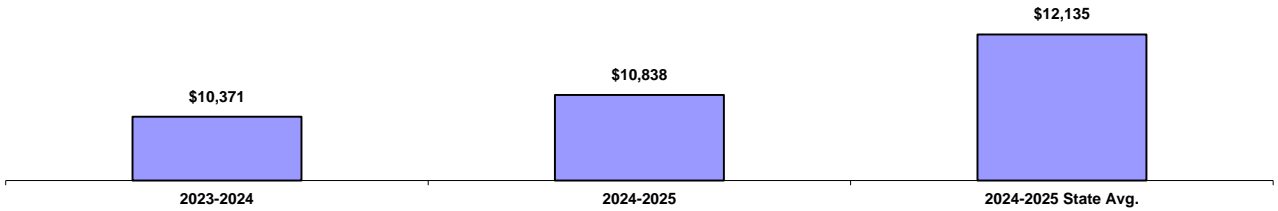
Other Career-Related Programs

Number of 11th/12th grade students enrolled in one-year programs:

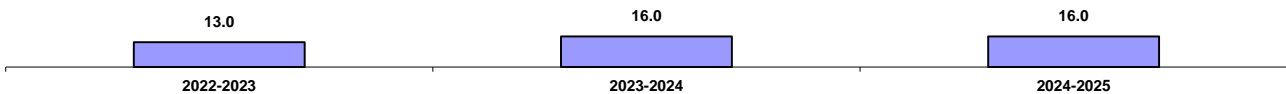
- “New Vision”
- Participated 1 yr of a CTE Program
- Other one-year programs

0	0	0	0
0	0	0	0
0	0	0	0

Tuition Per Student for CTE Programs
Data Source: 602 Report



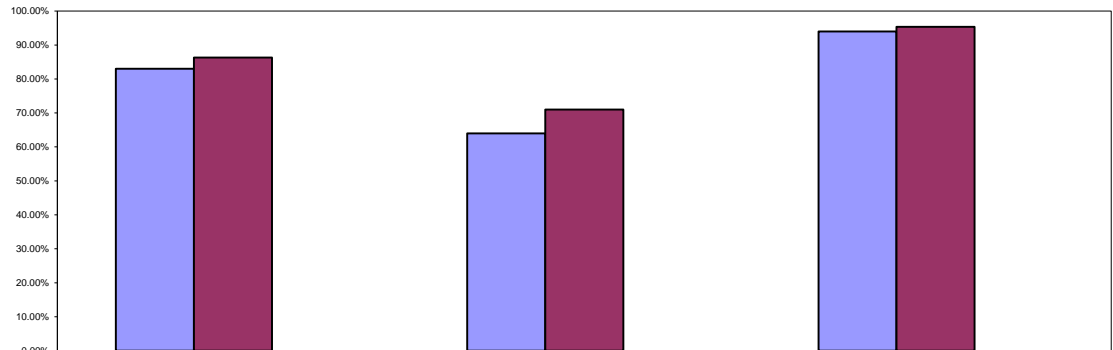
*Number Enrolled in CTE Programs as a Percent of all Juniors and Seniors in Component District High Schools
Data Source: SIRS



* Data Include General Education and Students with Disabilities. Data Source: SIRS

CTE Student Performance on Perkins Indicators Who Left School in 2023-2024

Data Source: SIRS



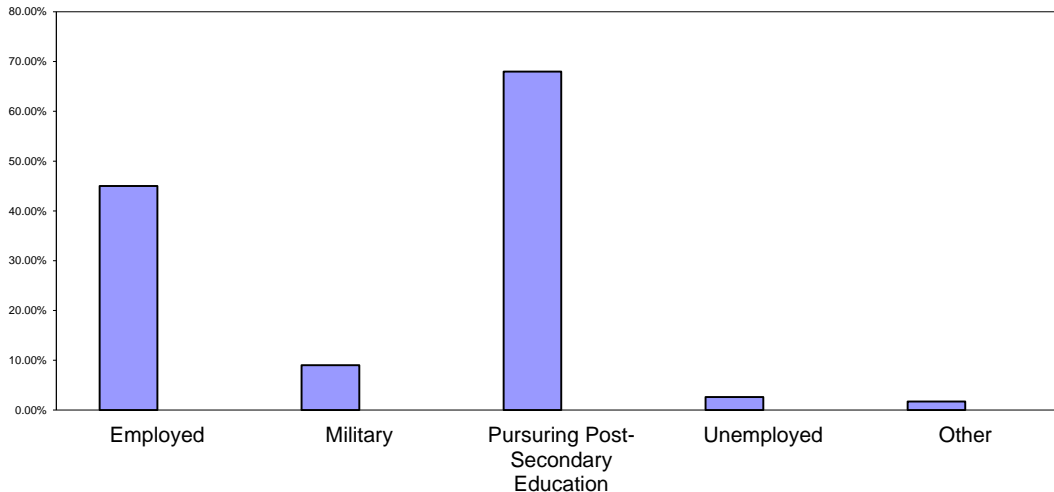
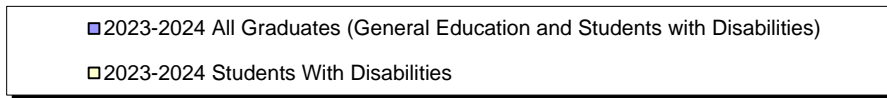
	ELA Regents Success	Math Regents Success	HS Completion
State Performance Target	83.00%	64.00%	94.00%
All CTE Students	86.30%	71.00%	95.37%
Students w/Disabilities	0.00%	0.00%	0.00%

Status of Career and Technical Education (CTE) Students 2023-2024 Placement Outcomes

BOCES Surveys CTE concentrators six months after they last attended their CTE program to determine if they are employed or continuing their education. *Data Source: CTE Placement Report*

Total Placement

This BOCES	State Target
95.7%	93%



**General Educational Development Test (GED Test)
For CTE Students Age 16-18
2024-2025**

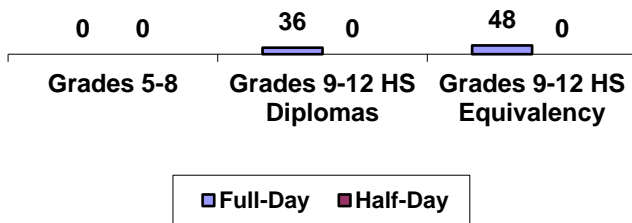
New York State selected the General Educational Development Test (GED® Test) to replace the Test Assessing Secondary Completion (TASC™ Test) as the primary pathway to a New York State High School Equivalency (HSE) Diploma, effective January 2022.

	Grades 9-12 Programs Leading to a GED	
	Half-day	Full-day
Number of students who:		
Enrolled	0	0
Passing Rate of Students Tested	0	0
Remained / Still Enrolled in the Program	0	0
Left the program and did not enter another district or BOCES program (dropouts)	0	0
Returned to School District:	0	0

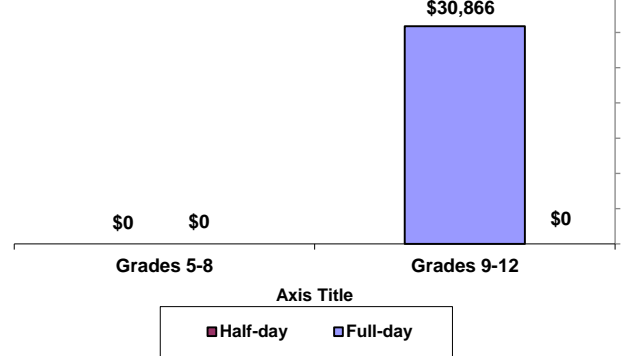
Alternative Education

BOCES operates full-day and/or half-day programs for general-education students who have been identified as having special needs not being met in school district programs. Programs may include academics, vocational skills, work-study, specialized activities or a combination of these. The BOCES Report Card includes alternative education program enrollment and outcome data for students in grades 5 through 8, as well as students in programs leading to high school diplomas or high school equivalency diplomas.

**Alternative Education Program Enrollment
June 30, 2025**



2024-2025 Per Student Tuition



Alternative Education Outcomes

The objective of the alternative education program is to retain students until they graduate or return to a regular school setting. Students counted as leaving programs may have done so for a variety of reasons including relocation, medical problems, childcare, incarceration or entering other education programs.

	Grades 5-8		Grades 9-12 Programs Leading to HS Diploma		Grades 9-12 Programs Leading to HS Equivalency Diplomas	
	Full-day	Half-day	Full-day	Half-day	Half-day	Full-day
Number of students who:						
Returned to a school district program	0	0	0	0	0	0
Remained in the BOCES program	0	0	32	0	12	26
Left the program and did not enter another district or BOCES program (dropouts)	0	0	4	0	3	7
Received high school diplomas			13	0		

**Alternative Education State Testing Program
2024-2025 School Year**

State Assessment- Regents Exams	Counts of Students Tested				Percentage of Students Tested			Count of Students Exempted from Exam with Credit
	Below 55	55-64	65 and Above	Total	Below 55 - Percent	55-64 - Percent	65 and Above - Percent	
Algebra I (CC)	13	9	1	23	57%	39%	4%	
Algebra II (CC)	0	0	0	0	0.0%	0.0%	0.0%	
Geometry	0	0	0	0	0.0%	0.0%	0.0%	
Geometry (CC)	0	0	0	0	0.0%	0.0%	0.0%	
English Language Arts	5	2	8	15	33%	13%	54%	
Living Environment	1	4	3	8	13%	50%	37%	
Physical Setting/ Earth Science	0	0	0	0	0.0%	0.0%	0.0%	
Physical Setting/ Chemistry	0	0	0	0	0.0%	0.0%	0.0%	
Physical Setting/ Physics	0	0	0	0	0.0%	0.0%	0.0%	
Global History and Geography II	4	4	8	16	25%	25%	50%	
United States History and Government	2	3	12	17	12%	18%	70%	
Life Science: Biology	0	0	0	0	0.0%	0.0%	0.0%	
Earth and Space Sciences	0	0	0	0	0.0%	0.0%	0.0%	

Adult Career and Technical Education (CTE)

Adult CTE programs enhance academic and workplace skills and enable participants to gain employment or career advancement. *Data Source: ASISTS*

	This BOCES Count Percentage		BOCES Statewide Average
All CTE Programs			
Enrolled during 2023-2024	774	--	--
Continuing Enrollment after 2023-2024	258	33.3%	16.94%
Completed or Left During 2023-2024	516	66.67%	83.37%
Left Prior to Completion During 2023-2024	76	14.73%	12.50%
Completed by the End of 2023-2024	440	85.27%	71.16%
Completed or Left During 2023-2024 and Status Known	482	93.41%	42.00%
Completed/Left/Status Known and Successfully Placed*	412	85.48%	37.15%
Completed but Not seeking Employment	53	12.125%	3.02%
Non-Traditional CTE Programs			
Enrolled in Non-Traditional Programs During 2023-2024	0		47.12%
Completed a Non-Traditional Program By the End of 2023-2024	0	0.0%	37.43%
Under-Represented Gender Members Enrolled during 2023-2024	0		5.95%
Under-Represented Gender Members Who Completed during 2023-2024	0	0.0%	4.41%

* Successfully Placed means placed in employment, the military or in additional education.

Adult Basic Education

Based on data reported for the National Reporting System (NRS) for adult education programs, enrollment in adult basic education programs for 2024-25 was 2164.

Educational Gain

Under the NRS, educational gain is the primary goal for students in adult beginning/intermediate programs, adult secondary (low) programs, and in English for speakers of other languages programs. Students are counted as achieving educational gain if they exceed established reference points in their standardized test scores between enrollment and re-testing.

Educational Program	Enrollment			Educational Gain					
	2022-23	2023-24	2024-25	2022-23		2023-24		2024-25	
					Percent		Percent		Percent
Adult Beginning/Intermediate	317	276	269	181	56.9%	115	41.5%	33	63%
Adult Secondary (Low)	6	4	5	2	23.6%	4	100.0%	3	60%
ESOL	1712	1880	1890	1046	61.1%	1222	65.0%	1215	64.3%

Other Outcomes (2022-23 through 2024-25)

The following outcome measures are consistent with the National Reporting System (NRS) for adult education. Students in adult secondary (high) programs are considered to have a primary goal of obtaining a secondary or high school equivalency diploma. For all other outcomes, the student achievements correlate to the students indicating those goals at intake.

Other Outcomes	Students with Goal			Students Achieving Goal					
	2022-23	2023-24	2024-25	2022-23		2023-24		2024-25	
					Percent		Percent		Percent
Entered employment	0	0	0	0	0.0%	0	0.0%	0	0.0%
Retained employment	0	0	0	0	0.0%	0	0.0%	0	0.0%
Obtained secondary or HS equivalency diploma	0	0	0	0	0.0%	0	0.0%	0	0.0%
Entered post-secondary education or training	0	0	0	0	0.0%	0	0.0%	0	0.0%

Special Education

Special Education Enrollment and Tuition

When placing students, districts select among classrooms with different student/staff ratios consistent with each student's Individualized Education Program (IEP). The following are six of the alternatives:

- ❖ 12 students per teacher plus one paraprofessional (12:1:1)
- ❖ 6 students per teacher plus one paraprofessional (6:1:1)
- ❖ 12 students per teacher plus four paraprofessionals (12:1+1:3)
- ❖ 8 students per teacher plus 1 paraprofessional (8:1:1)
- ❖ 15 students per teacher plus 1 paraprofessional (15:1:1)
- ❖ 6 students per teacher plus 2.5 paraprofessional (6:1:2.5)

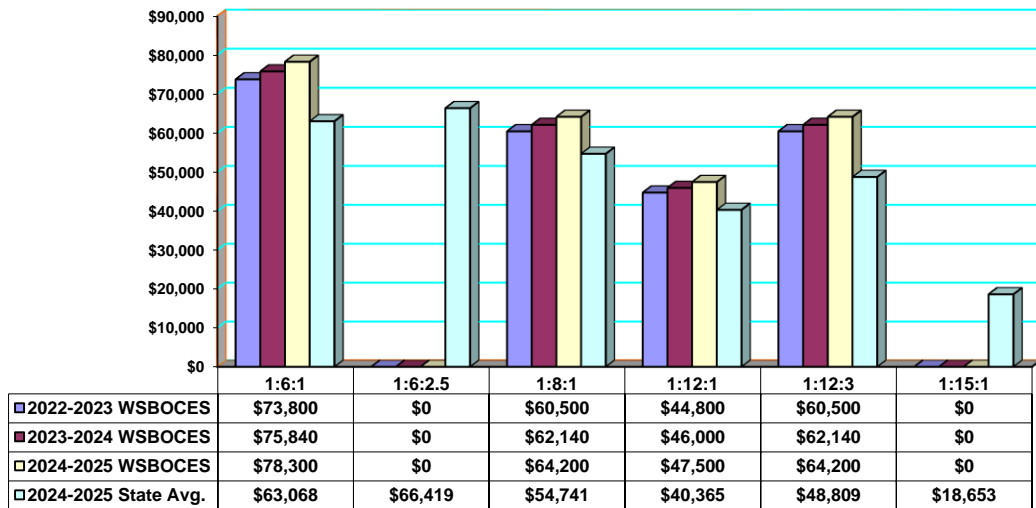
An addendum of enrollment and tuition information will be attached to this report if this BOCES provides other options of student/staff ratios.

Tuition rates exclude the costs of related services, preschool and summer school programs. BOCES with multiple tuition rates for a program have calculated an average rate. *Data source: 602 Report*

Enrollment Trends

	2022-2023	2023-2024	2024-2025
8:1:1	537	539	588
12:1+1:3	0	0	0
6:1:1	118	137	165
12:1:1	23	23	25
15:1:1	0	0	0
6:1:2.5	0	0	0
9:1:3	52	55	46

Tuition Rates Per Student 2022-2023 through 2024-2025



Special Education State Testing Program 2024-2025 School Year

These data are results of State assessments for students enrolled in BOCES programs.

Data Source: Data Warehouse

State Assessment	Counts of Students Tested					Percentage of Students Tested		No Valid Score
	Level 1	Level 2	Level 3	Level 4	Total	Level 2-4 Percent	Level 3-4 Percent	
Grade 3 English Language Arts	10	8	2	0	20	50.00%	10.00%	0
Grade 4 English Language Arts	8	3	0	0	11	27.27%	0.00%	0
Grade 5 English Language Arts	10	4	5	0	19	47.37%	26.32%	0
Grade 6 English Language Arts	9	4	1	0	14	35.71%	7.14%	0
Grade 7 English Language Arts	16	5	1	0	22	27.27%	4.55%	0
Grade 8 English Language Arts	12	4	2	1	19	36.84%	15.79%	0
Grade 3 Mathematics	12	4	4	0	20	40.0%	20.0%	0
Grade 4 Mathematics	11	0	0	0	11	0.0%	0.0%	0
Grade 5 Mathematics	12	2	5	0	19	36.84%	26.32%	0
Grade 6 Mathematics	9	3	2	0	14	35.71%	14.29%	0
Grade 7 Mathematics	17	1	4	0	22	22.73%	18.18%	0
Grade 8 Mathematics	17	2	1	0	20	15.00%	5.00%	0

Level 4	These students exceed the standards and are moving toward high performance on the Regents examination.
Level 3	These students meet the standards and, with continued steady growth, should pass the Regents examination.
Level 2	These students need extra help to meet the standards and pass the Regents examination.
Level 1	These students have serious academic deficiencies.

Special Education State Testing Program (cont'd.)
2024-2025 School Year

State Assessment- Regents Exams	Counts of Students Tested				Percentage of Students Tested			Count of Students Exempted from Exam with Credit
	Below 55	55-64	65 and Above	Total	Below 55 - Percent	55-64 - Percent	65 and Above - Percent	
Algebra 1	28	10	10	48	58.33%	20.83%	20.83%	
Algebra II (CC)	0	0	1	1	0.00%	0.00%	100.00%	
Geometry	0	0	0	0	0.0%	0.0%	0.0%	
Geometry (CC)	10	4	1	15	66.67%	26.67%	6.67%	
English Language Arts	38	7	13	58	65.52%	12.07%	22.41%	
Living Environment	35	13	6	54	64.81%	24.07%	11.11%	
Physical Setting/ Earth Science	26	7	14	47	55.32%	14.89%	29.79%	
Physical Setting/ Chemistry	0	0	0	0	0.0%	0.0%	0.0%	
Physical Setting/ Physics	0	0	0	0	0.0%	0.0%	0.0%	
Global History and Geography II	31	7	25	63	49.21%	11.11%	39.68%	
United States History & Government	25	6	14	45	55.56%	13.33%	31.11%	
Life Science: Biology	0	0	0	0	0.0%	0.0%	0.0%	
Earth and Space Sciences	0	0	0	0	0.0%	0.0%	0.0%	

**Students with Severe Disabilities Performance on the
New York State Alternate Assessments
2024-2025 School Year**

State Assessment	Counts of Students Tested					Percentage of Students Tested		No Valid Score
	Level 1	Level 2	Level 3	Level 4	Total	Level 2-4 Percent	Level 3-4 Percent	
Grade 3 English Language Arts	6	7	16	4	33	81.82%	60.61%	0.0%
Grade 4 English Language Arts	2	2	23	5	32	93.75%	87.50%	0.0%
Grade 5 English Language Arts	0	1	23	3	27	100.0%	96.30%	0.0%
Grade 6 English Language Arts	1	6	17	2	26	96.15%	73.08%	0.0%
Grade 7 English Language Arts	4	4	15	3	26	84.62%	69.23%	0.0%
Grade 8 English Language Arts	2	2	4	7	15	86.67%	73.33%	0.0%
High School English Language Arts	0	11	9	2	22	100.0%	50.0%	0.0%
Grade 3 Mathematics	10	5	17	1	33	69.70%	54.55%	0.0%
Grade 4 Mathematics	2	4	16	10	32	93.75%	81.25%	0.0%
Grade 5 Mathematics	4	4	14	5	27	85.19%	70.37%	0.0%
Grade 6 Mathematics	8	4	11	3	26	69.23%	53.85%	0.0%
Grade 7 Mathematics	6	5	12	3	26	76.92%	57.69%	0.0%
Grade 8 Mathematics	2	3	7	3	15	86.67%	66.67%	0.0%
High School Mathematics	0	4	16	2	22	100.0%	81.82%	0.0%

Data Source: Data Warehouse

Level 4	These students exceed the standards and are moving toward high performance on the Regents examination.
Level 3	These students meet the standards and, with continued steady growth, should pass the Regents examination.
Level 2	These students need extra help to meet the standards and pass the Regents examination.
Level 1	These students have serious academic deficiencies.

Professional Development 2024-2025 School Year

The data in this chart is from BOCES-sponsored professional development and offered by Instructional Support Divisions.

BOCES provided training in the following areas:	Number of Hours Offered and Number of Participants:									
	Superintendents or District-level		Principals or Building-level admins		Teachers		Paraprofessionals		Other	
	Hours	# Staff	Hours	# Staff	Hours	# Staff	Hours	# Staff	Hours	# Staff
Curriculum & Instruction:										
Learning Standards	120	30	120	120	120	509	120	25	0	
Instructional Strategies	450	132	450	413	450	1250	450	85	0	
Data-Driven Instruction	40	11	40	7	40	100	40	0	0	
Effective Use of Technology	108	34	108	27	108	262	108	0	0	
Project Based Learning	60	8	60	70	60	154	60	0	0	
Parent Engagement	6	2	6	5	6	20	6	0	0	
RBE-RN	0		0		0		0		0	
College, Career & Civic Readiness	25	7	25	6	25	37	25	0	0	
Response to Intervention	102	9	102	32	102	40	102	0	0	
Early Childhood Education	40	5	40	10	40	120	40	0	0	
Career and Technical Education	0		0		0		0		0	
Middle Level Education	25	5	25	10	25	102	25	0	0	
Special Education Strategies	200	20	200	70	200	135	200	0	0	
Leadership:										
APPR: Lead Evaluator & Principal Evaluator Training	108	40	108	115	0	7	0	0	0	
Leadership Development	40	100	40	40	40	10	0	0	0	
District & School Strategic Planning	50	51	50	34	50	20	0	0	0	
Using Data	40	11	40	7	40	55	0	0	0	
Culture/Climate (indicate below)										
Diversity/Equity/Inclusivity	50	20	50	35	50	98	50	3	0	
Social – Emotional Learning	120	2	120	4	120	87	120	10	0	
Other culture/climate	6	2	6	4	6	10	6	0	0	
Safety	6	0	6	0	6	15	6	0	0	
Other	0		0		0		0	0	0	

2024-2025 Expenses

Data Source: SA111, schedule 2A

Administrative Expenses.....	\$	16,730,293.87
Capital Expenses.....	\$	4,329,184.89
Total Program Expenses.....	\$	222,949,467.84
Total Expenses.....	\$	244,008,946.60

